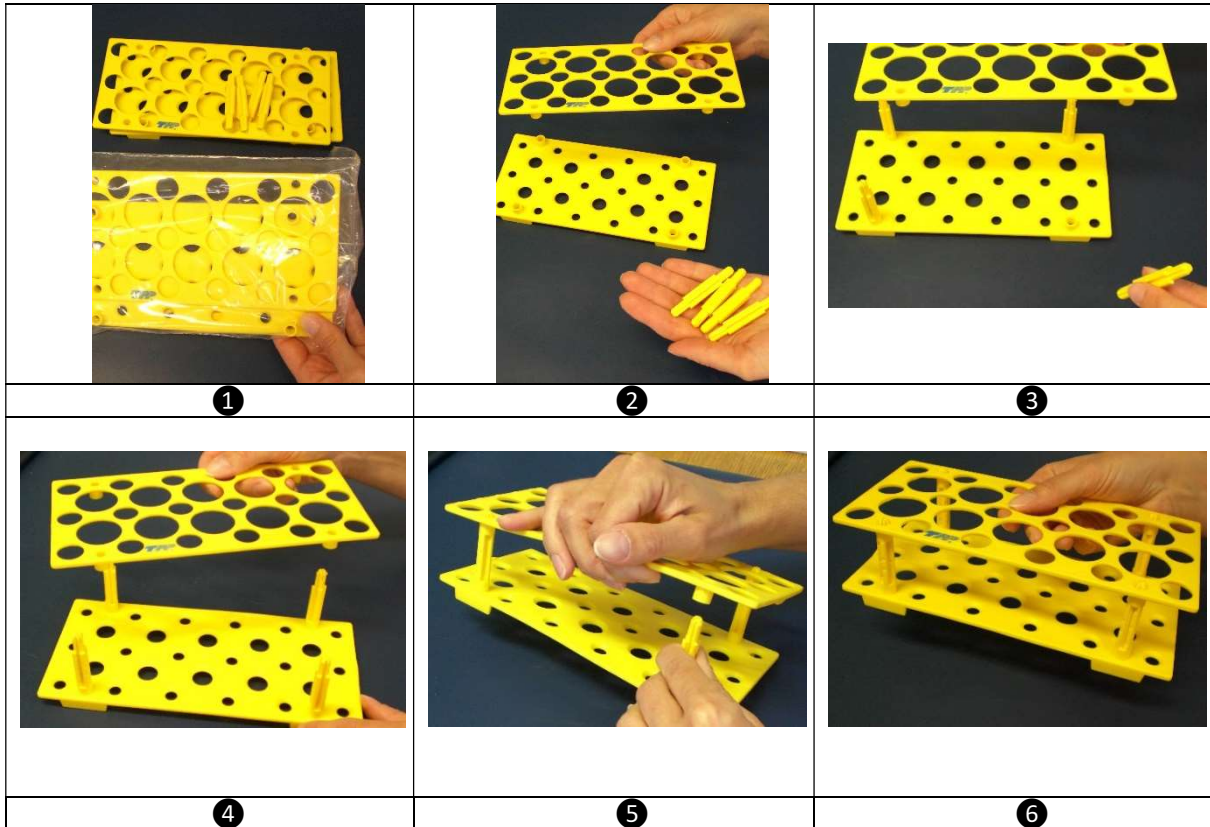




Assembling & Disassembling of a TPP Tube Rack

Assembling (①–⑥)

Disassembling, follow steps in reverse order (⑥ to ①).



Rack “S” and “L” for centrifuge tubes

- Identification: Alphanumeric coded
- Storage: Space saving, as it can be quickly disassembled

Holds:

- Rack “S”: 18 x 15 mL and 10 x 50 mL
- Rack “L”: 30 x 15 mL and 20 x 50 mL



Measurements	99017	99019
Length mm	209	209
Width mm	98	172
Height mm	62	62
Tubes per rack	18	30
Materials	PP	
Working Temperature	+121 to -190 °C	
Autoclavable	yes	
Sterilizing instructions:	Please sterilize disassembled only	

Disclaimer

TPP products are intended for Research Use Only (RUO) and are not approved for clinical, diagnostic, or in vitro fertilization (IVF) applications. The full Terms & Conditions, including limitations of warranty and liability, intended use, and reseller obligations, are available at:
https://www.tpp.ch/page/qualitaets_sicherung/index.php

Distributors who purchase and distribute TPP products acknowledge and agree to these Terms & Conditions and the associated disclaimer.